

Test: Primary 4 - Term 4 Science (Henry Park)

Points: 70 points

Name: _____

Score: _____

Date: _____

Signature: _____

Select multiple choice answers with a cross or tick:

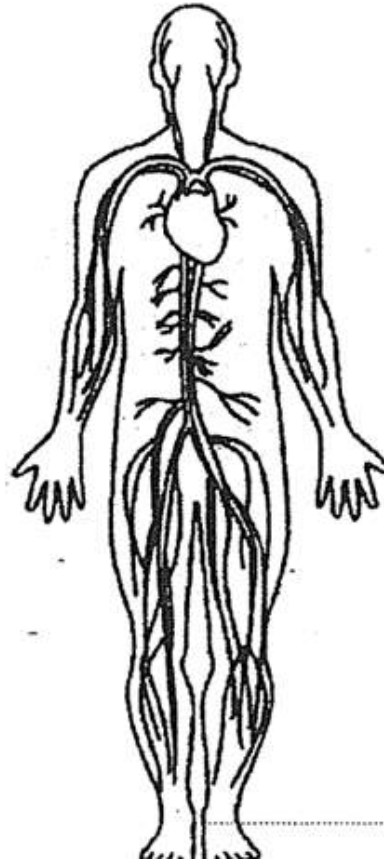
Only select one answer

Can select multiple answers

Booklet A (28 x 2 marks)

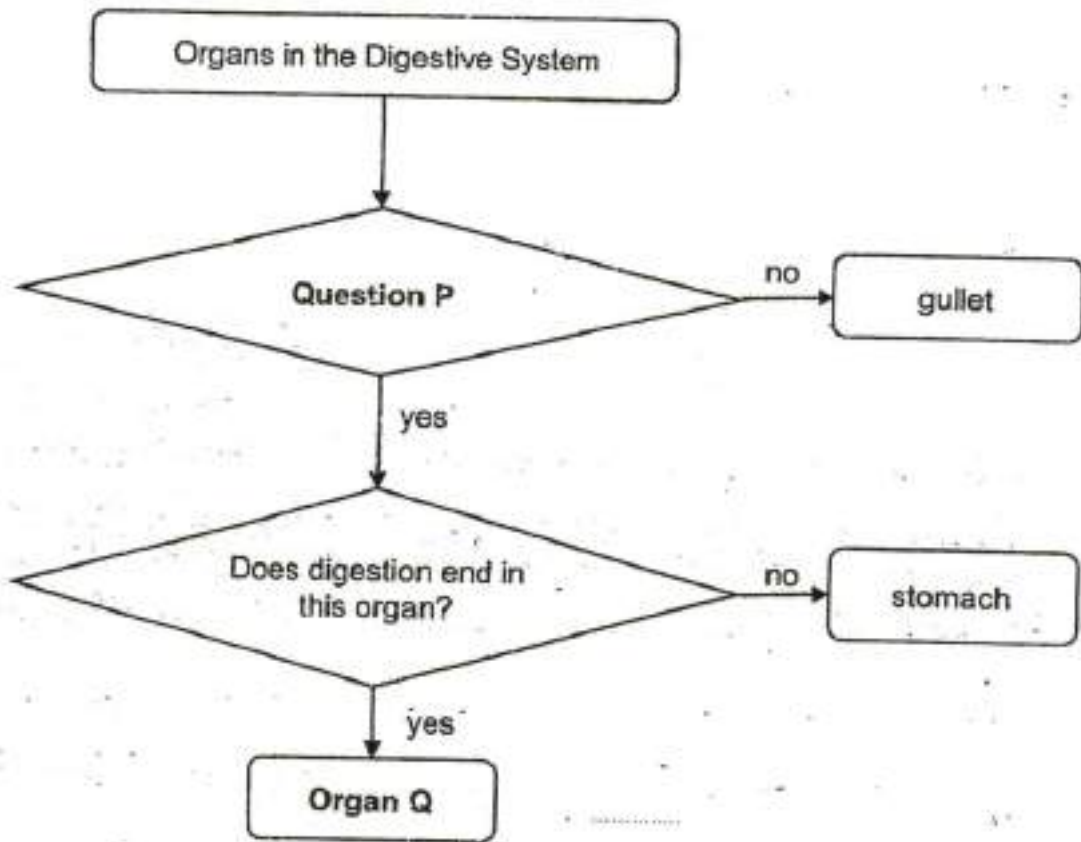
For each question from 1 to 28, four options are given. One of them is the correct answer.

Which organ system is shown in the diagram?



-
- A) digestive system
 - B) muscular system
 - C) circulatory system
 - D) respiratory system

Study the flow chart shown below.



Which one of the following is correct?

	Question P	Organ Q
(1)	Does it produce digestive juice?	Small intestine
(2)	Does it lead food to the stomach?	Large intestine
(3)	Does it break food into smaller pieces?	Mouth
(4)	Does it remove water from undigested food?	Small intestine

- A) 1
- B) 2
- C) 3
- D) 4

Question 3 of 60

Primary 4 Science (Term 4) 2 pts

The arrow (---->) in the diagram below shows the direction of movement of a substance on plants

roots ----> stem ----> leaves

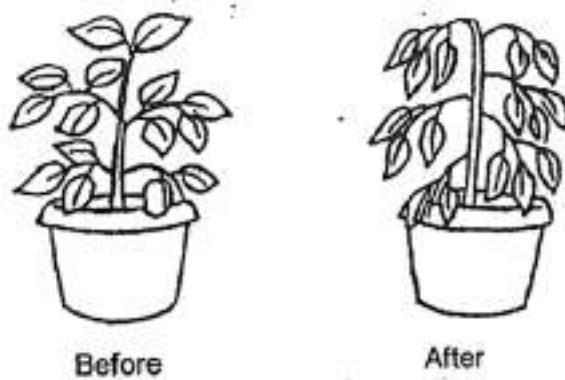
What is this substance?

- A) soil
- B) food
- C) water
- D) oxygen

Question 4 of 60

Primary 4 Science (Term 4) 2 pts

Sally spread a layer of clear cooking oil on the stem and both surfaces of the leaves of a plant. The plant was then placed in the sun and watered every day.

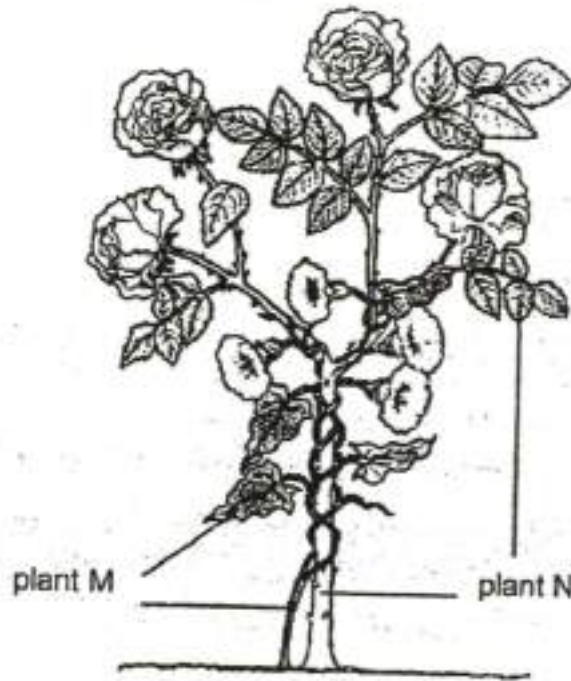


A few days later, she noticed that the plant had withered.

The plant withered because the layer of clear cooking oil prevented the plant from

- A) exchanging gases
- B) absorbing nutrients
- C) absorbing water from the ground
- D) transporting food to other parts of the plant

The diagram shows two different types of plants, M and N, growing in a garden.



Which of the following statements are correct about plants M and N?

- A Plant M has a weak stem.
- B Only plant N is a flowering plant.
- C The stems of both plants help the leaves to get sunlight.

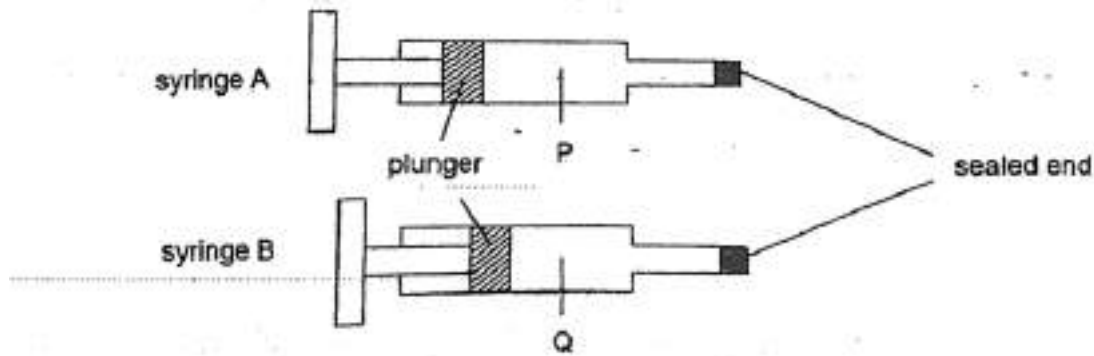
- A) A and B only
- B) B and C only
- C) A and C only
- D) A, B and C

In which part of the digestive system is digested food absorbed into the blood?

- A) mouth
- B) stomach
- C) large intestine
- D) small intestine

Two syringes, A and B, contain the same amount of substances P and Q respectively.

The plunger in the syringe A could not be pushed in while the plunger in syringe B could be pushed in slightly as shown in the diagram below.

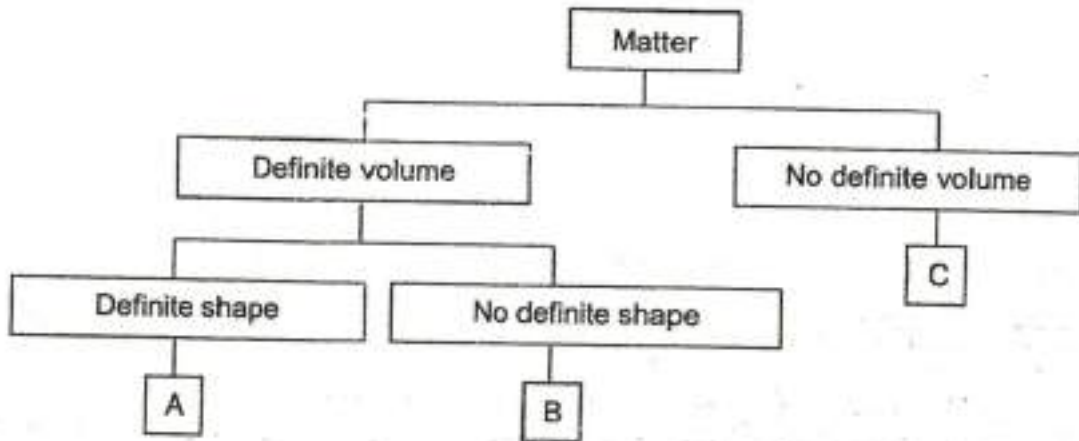


Which of the following substances are most likely to be P and Q?

	P	Q
(1)	air	oil
(2)	oxygen	carbon dioxide
(3)	oil	water
(4)	water	air

- A) 1
- B) 2
- C) 3
- D) 4

Study the classification table shown below.

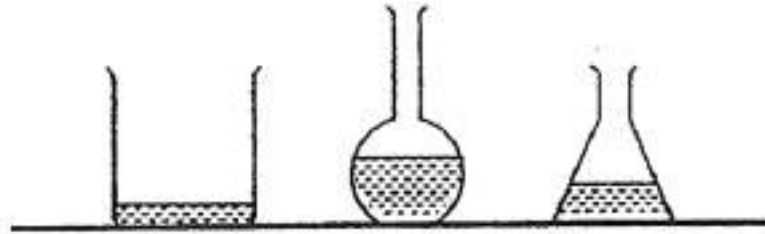


Based on the information given above, which one of the following is correct?

	A	B	C
(1)	pebble	water	air
(2)	pebble	air	water
(3)	water	pebble	air
(4)	water	air	pebble

- A) 1
- B) 2
- C) 3
- D) 4

Michael filled three different containers with the same amount of water as shown below.



What can he conclude from his experiment?

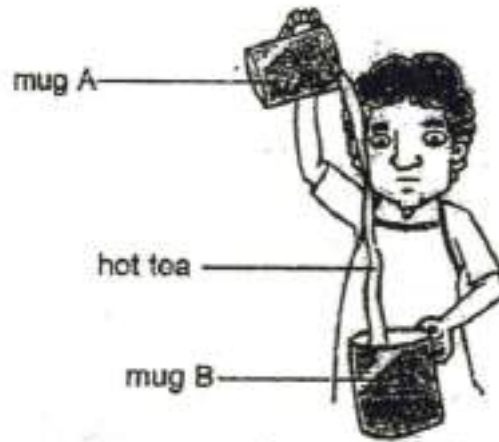
- A Liquids have mass.
- B Liquids occupy space.
- C Liquids cannot be compressed.
- D Liquids take the shape of the container.

-
- A) A and C only
 - B) B and D only
 - C) A, B and D only
 - D) B, C and D only

Which one of the following is the best conductor of heat?

-
- A) metal cup
 - B) paper cup
 - C) plastic cup
 - D) wooden cup

The picture below shows a man pouring hot tea from mug A to mug B and back to mug A.



The hot tea is cooled through this process of pouring and "pulling" it between the two mugs. The man repeats these actions continuously for a number of times.

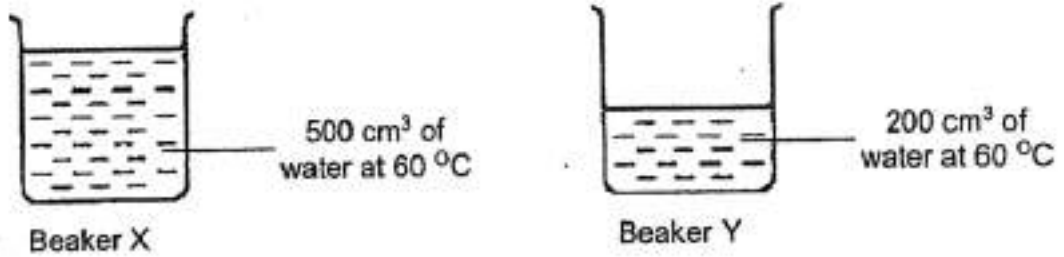
The man did this to transfer heat from the _____.

- A) mugs to the tea
- B) tea to the surrounding
- C) surroundings to the tea
- D) mugs to the surrounding

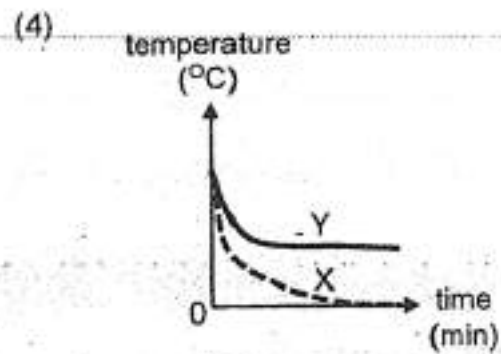
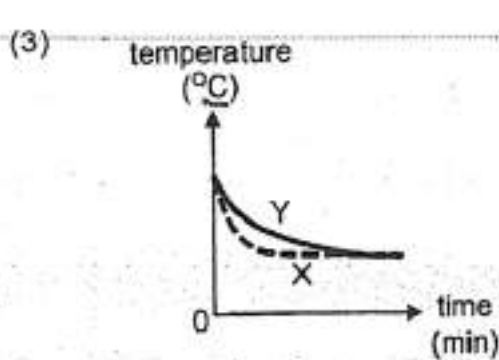
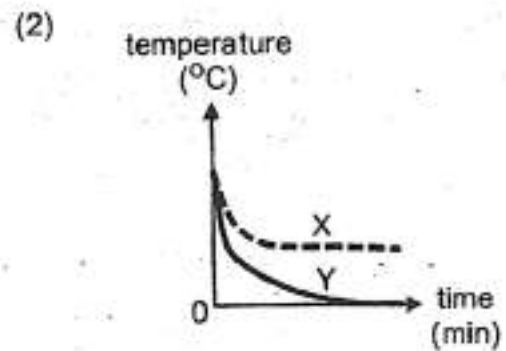
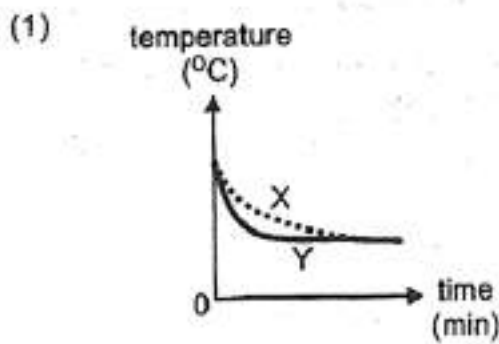
The best way to tell if someone is having a fever is to ____

- A) ask if the person feels warm
- B) use a data logger with a light sensor on the person
- C) use your hand and feel if the person's forehead is hot
- D) use a thermometer to measure the person's temperature

Yoo Jin left two identical beakers X and Y in her living room.

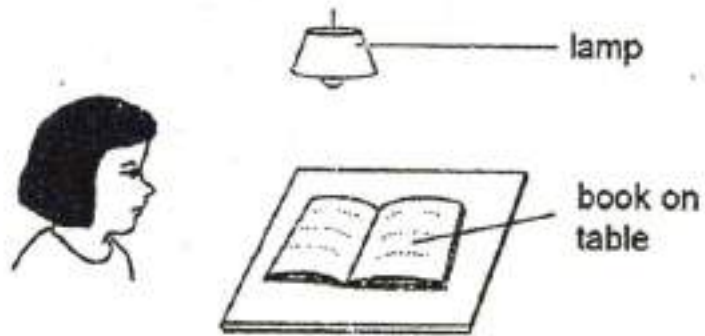


Which of the following graphs shows the likely changes in the temperature of the water in beakers X and Y?

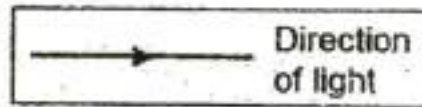


- A) 1
- B) 2
- C) 3
- D) 4

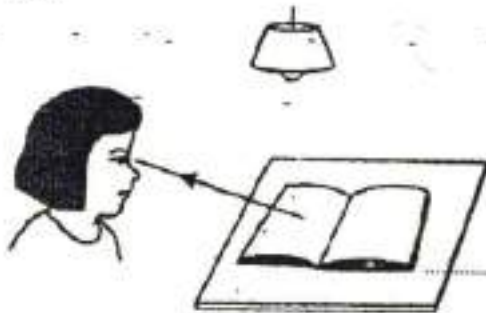
Look at the picture below.



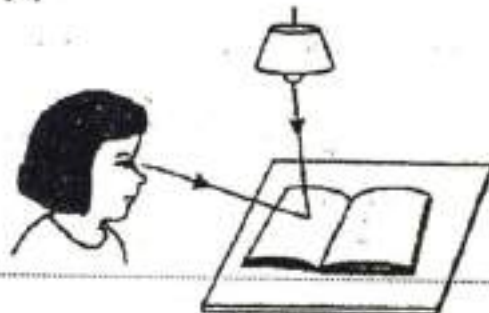
Which one of the following explains why Sue can see the book on the table?



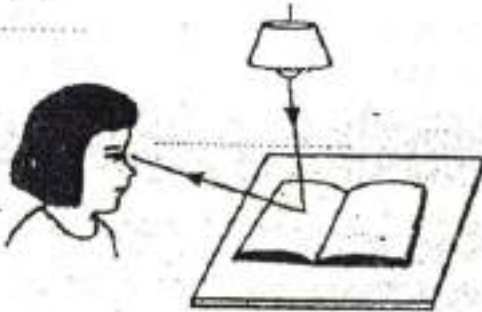
(1)



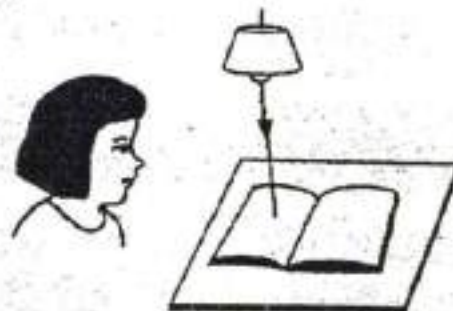
(2)



(3)

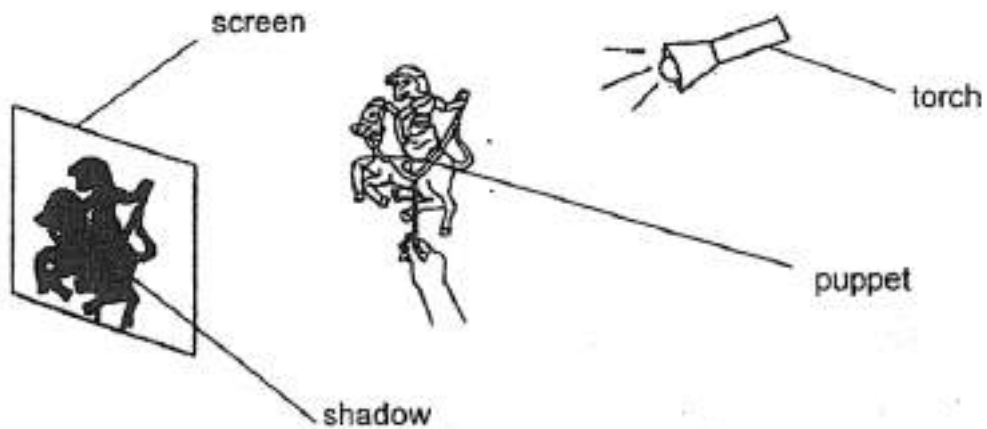


(4)



- A) 1
- B) 2
- C) 3
- D) 4

A shadow play is performed by placing a puppet between a screen and a torch.

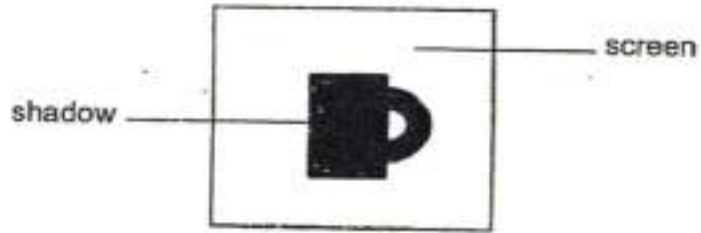


The shadow cast on the screen can be made bigger by _____.

- A moving the torch further from the puppet
- B moving the torch closer to the puppet
- C moving the screen closer to the puppet
- D moving the screen further from the puppet

-
- A) A only
 - B) D only
 - C) B and D only
 - D) B and C only

An object is placed in front of a light source. A shadow is formed on the screen as shown below.



Which one of the following shows the object that could have been used to form the shadow?

(1)



(2)



(3)

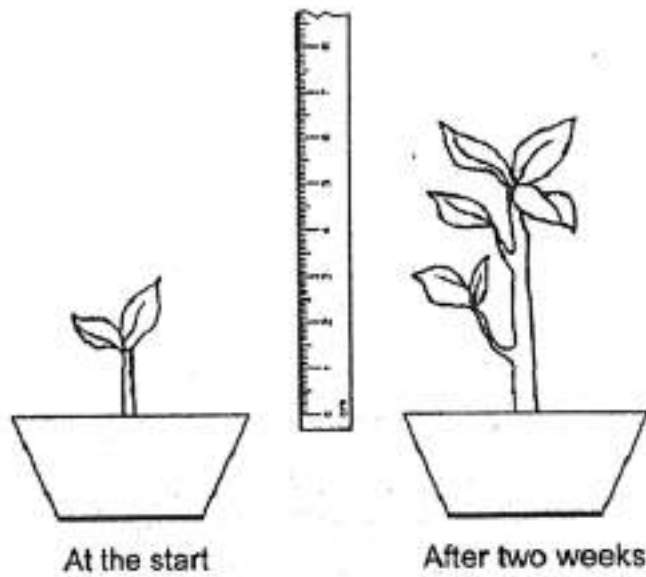


(4)



- A) 1
- B) 2
- C) 3
- D) 4

Sarah found a plant in the garden and measured its height.



After two weeks, she measured its height again.

From her observation, Sarah concluded that the plant is a living thing because it can _____.

- A) grow
- B) breathe
- C) respond
- D) make food

Which one of the following can be attracted by a magnet?

- A) iron rod
- B) glass rod
- C) plastic rod
- D) wooden rod

The diagrams below show a fern and some mushrooms.



Fern

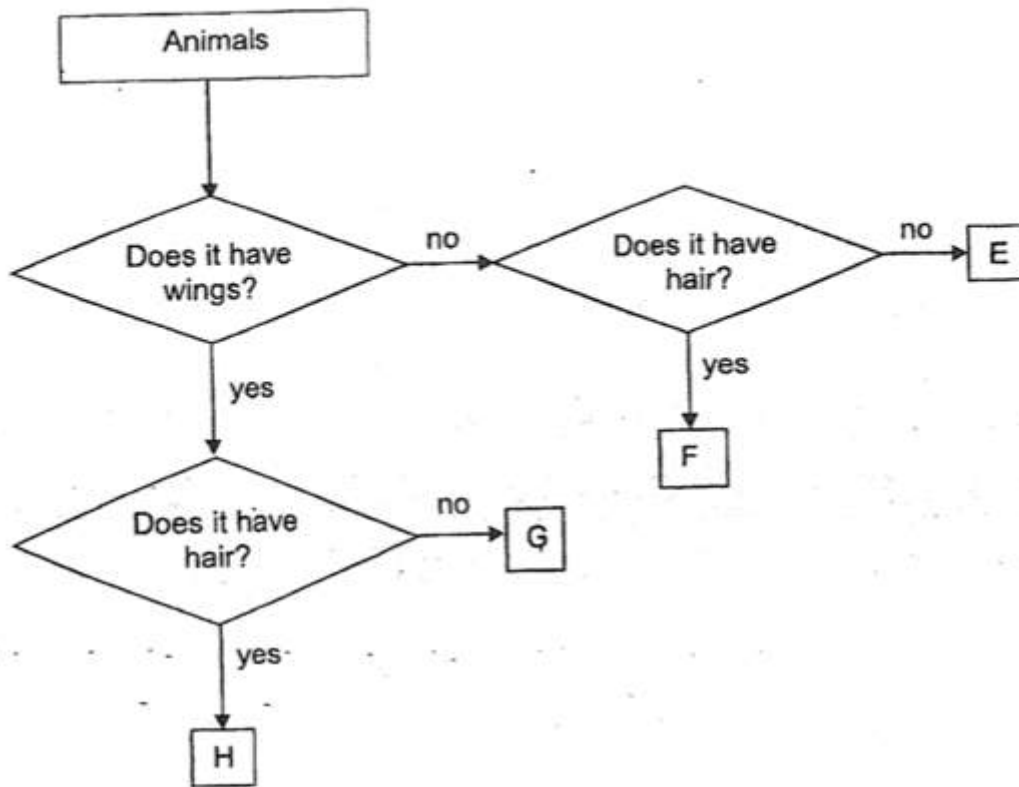


Mushrooms

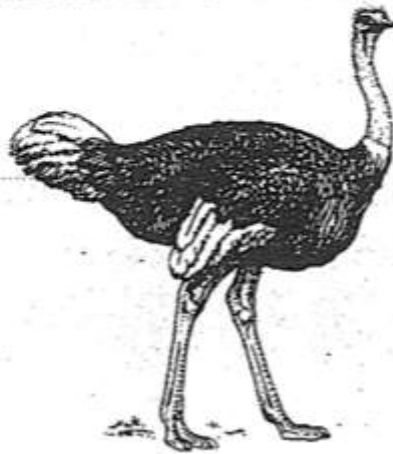
Which of the following statements about the mushrooms and the fern is correct?

-
- A) Both the mushrooms and the fern make their own food
 - B) The fern produces flowers but the mushroom does not
 - C) The mushroom reproduce by spores but the fern does not
 - D) The mushrooms and the fern needs air, food and water to survive

Study the flow chart carefully.



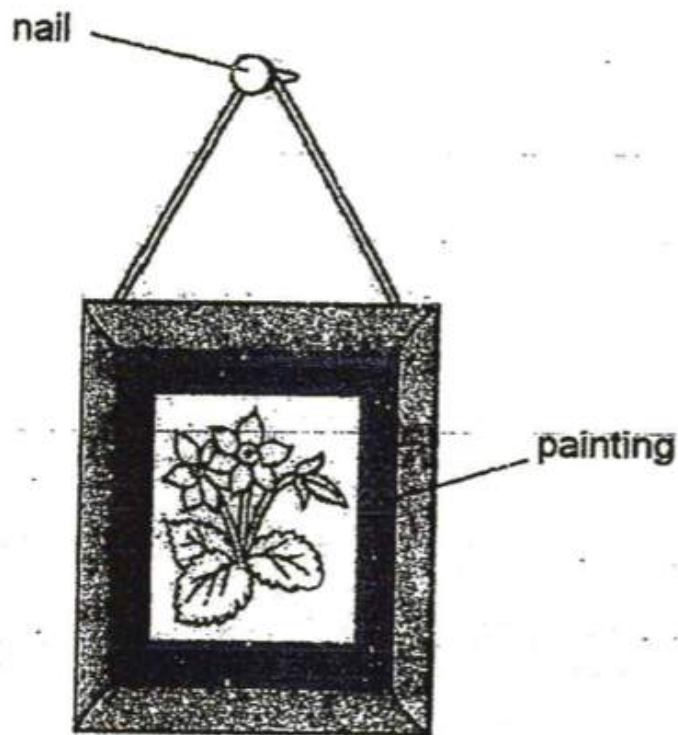
In which group should animal Q be placed?



Animal Q

- A) E
- B) F
- C) G
- D) H

The diagram shows a painting hanging on a wall.



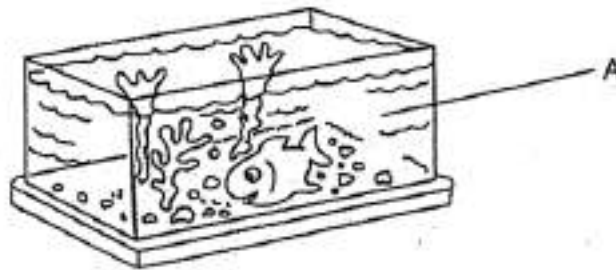
Steel is used to make nails because it _____

- A) is shiny
- B) is strong
- C) is magnetic
- D) sinks in water

The table below shows the properties of 4 different materials, W, X, Y and Z.

	Allows most light to pass through	Waterproof	Flexible
W		✓	✓
X	✓		✓
Y	✓	✓	
Z	✓	✓	✓

Key
✓ : present



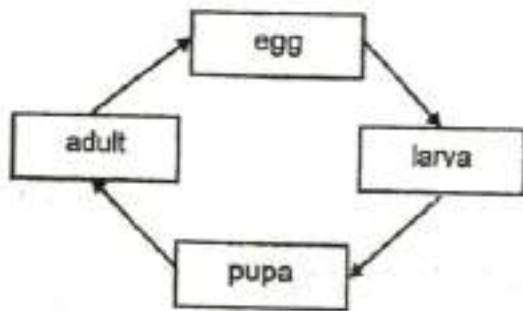
Which of the following materials, W, X, Y, or Z, is most suitable for making part A of the fish tank shown above?

- A) W
 B) X
 C) Y
 D) Z

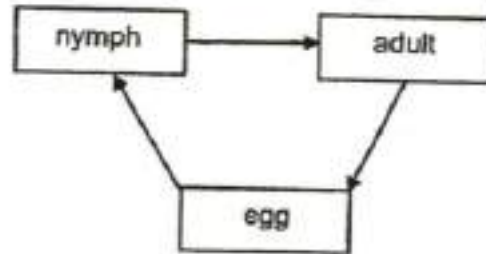
Which animal has a pupa as a stage in its life cycle?

- A) frog
 B) chicken
 C) grasshopper
 D) mosquito

The diagram below shows the life cycles of animals Y and Z.



Animal Y



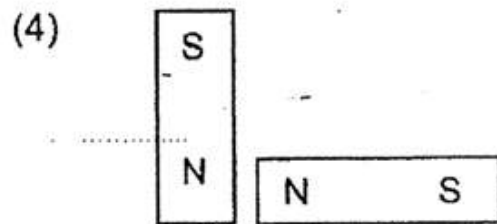
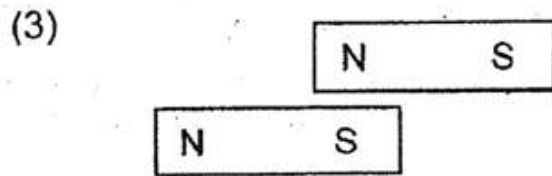
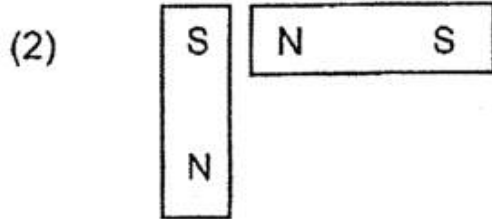
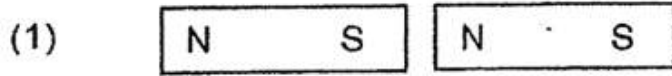
Animal Z

Based on the life cycles above, which of the following statement(s) is likely to be correct?

- A Animal Y has 4 stages in its life cycle but animal Z has 3.
- B Animal Y lays eggs in water but animal Z lays eggs on land.
- C The young of animal Y looks like the adult but the young of the animal Z does not look like the adult.
- D Animal Y takes a longer time than animal Z to develop from an egg to an adult.

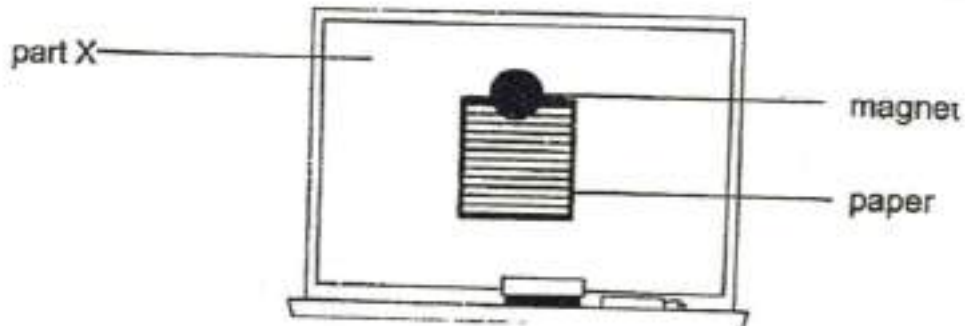
- A) A only
- B) B and D only
- C) A, B and C only
- D) A, B, C and D

In which of the following would the two magnets push each other away?



- A) 1
- B) 2
- C) 3
- D) 4

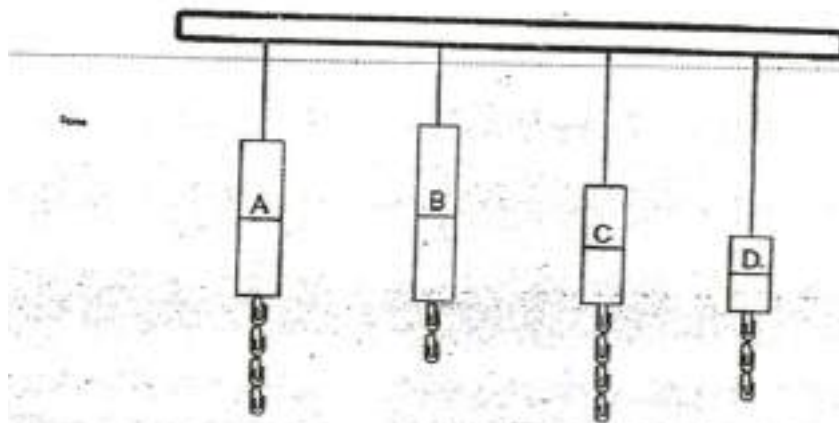
A magnet is used to hold a piece of paper on the whiteboard as shown below.



Which one of the following is part X of the whiteboard likely to be made of?

- A) Iron
- B) Plastic
- C) Copper
- D) Aluminium

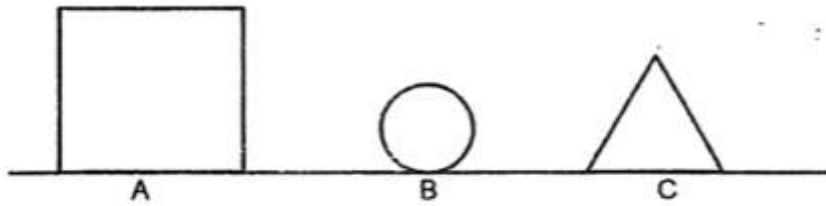
Raja has four magnets, A, B, C and D. He carried out an experiment to find out which magnet was the strongest. The diagram below shows the number of steel paper clips attracted by each magnet.



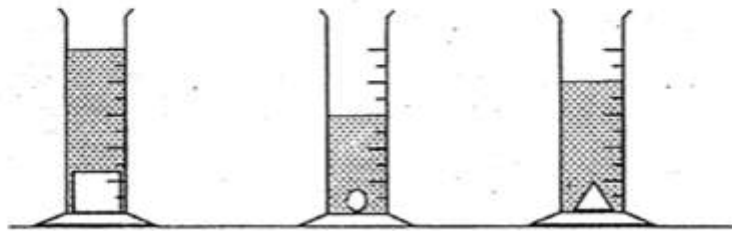
Based on the diagram, which of the following statements is correct?

- A) Magnet D is the weakest
- B) Magnet B is the strongest
- C) Magnet B is weaker than Magnet D
- D) Magnet A is stronger than Magnet C

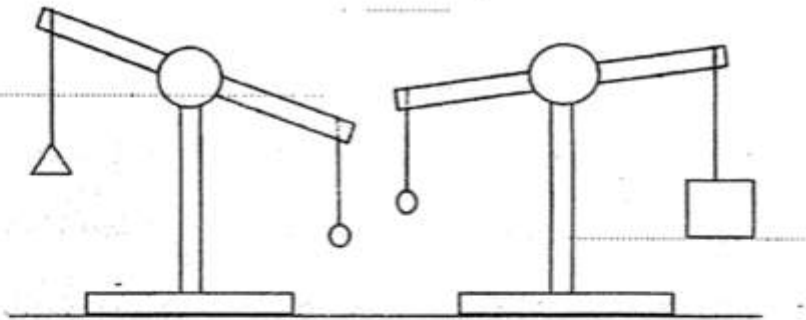
Benny has three objects, A, B and C as shown below.



He placed these objects into measuring cylinders, each containing 2ml of water.



He compared their mass as shown below.



Which of the following correctly identifies the objects with the largest volume and mass?

	Largest volume	Largest mass
(1)	A	C
(2)	B	A
(3)	A	B
(4)	B	C

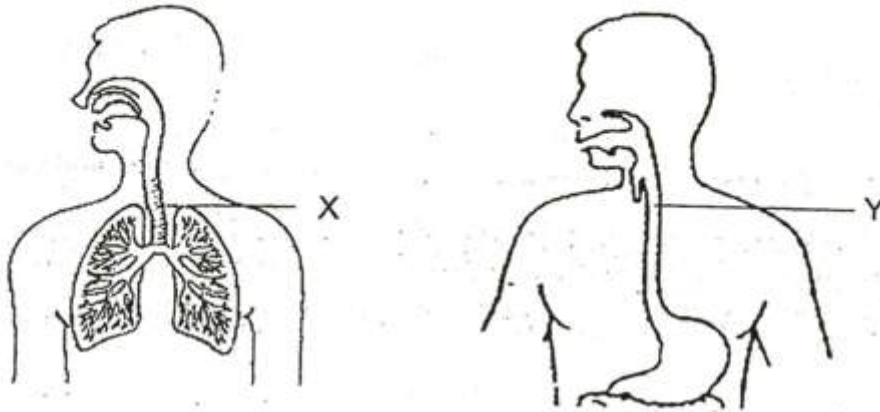
- A) 1
- B) 2
- C) 3
- D) 4

Booklet B

This section is designed for extended answers that parent/ teacher will have to assign and guide child to attempt after the test has been completed.

Grading: This question type is not graded on this system and will not affect the final score as it was designed in such a way that it requires manual assistance.

The diagrams below show two different organ systems in the human body.



Based on the diagrams, complete the table shown below.

[2]

	Name of organ	Substance that passes through the organ	Name of system that the organ belongs to
X	windpipe		
Y		food	

Please press "done" to proceed to the next question

Name another organ in the digestive system where digestion does not take place

Question 31 of 60

Primary 4 Science (Term 4) 1 pt

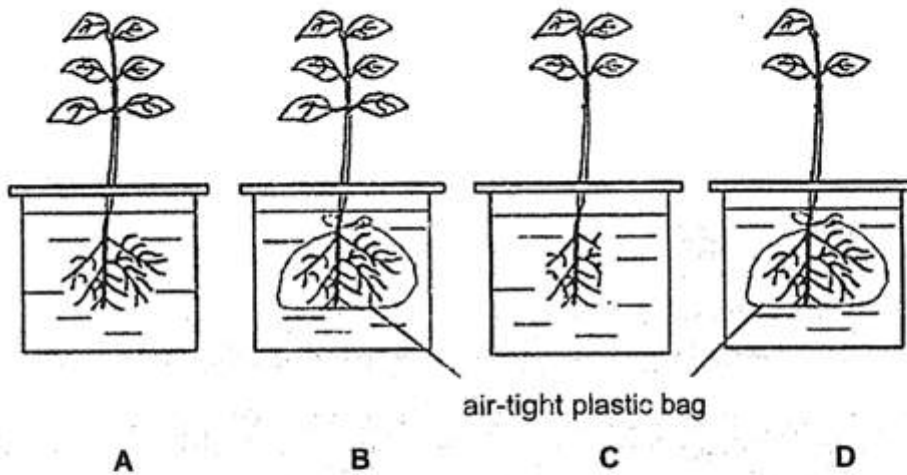
Beside digested food, name two substances that are carried in the blood to all parts of the body.

____, _____

Question 32 of 60

Primary 4 Science (Term 4) 0 pts

Gina prepared four experimental set-ups (A, B, C and D) with plants as shown below. She wanted to know whether plants take in water through their roots.



The roots of the plants in set-ups B and D were tied with air-tight plastic bags at the start of the experiment before putting into the beaker of water. Each set-up had the same amount of water.

Can she use set-ups B and D to conduct a fair experiment?

[2]

Explain your answer.....

Question 33 of 60

Primary 4 Science (Term 4) 0 pts

Gina uses set-ups A and B to conduct a fair experiment. What is she trying to find out from this experiment?

Question 34 of 60

Primary 4 Science (Term 4) 0 pts

State another function of the roots

Question 35 of 60

Primary 4 Science (Term 4) 0 pts

Classify the following into matter and non-matter.

[3]

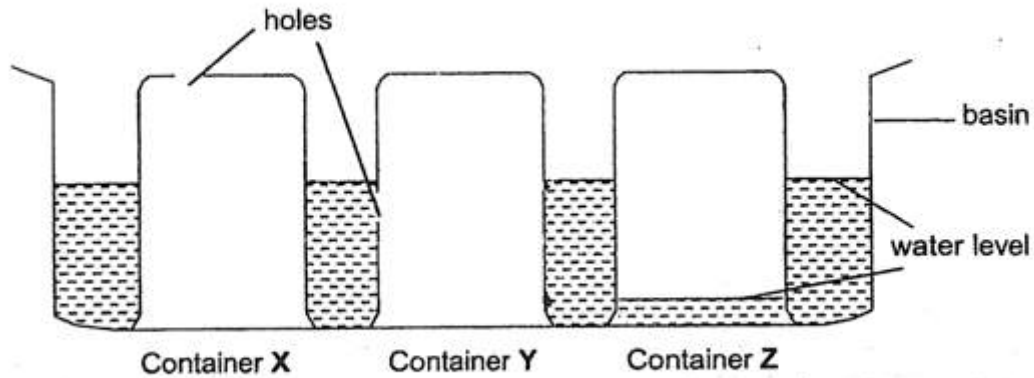
heat	water	shadow
------	-------	--------

Matter	Non-matter

"done" to proceed to the next question

Please type

Three plastic containers, X, Y and Z, are inverted into a basin of water as shown below. A hole is made on containers X and Y.



Draw the water levels in containers X and Y in the diagram above.

[1]

Please type "done" to proceed to the next question

Explain your answer for the water level in container X in part (a)

The diagram below shows a glass of water.



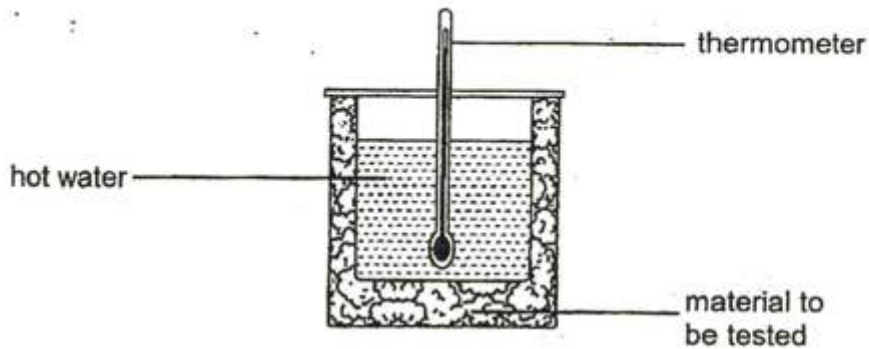
Fill in the blanks using the correct words in the box.

[2]

(a) When the water gains heat, its temperature _____ .

The glass of water is put in the freezer. After some time, the water will change its state to become ____

Ahmad wanted to find out which material, P, Q, R or S, is the best conductor of heat. He set up his experiment in the Science room as shown below.



The table below shows Ahmad's results.

Time (min)	Temperature of the water (°C)			
	Material P	Material Q	Material R	Material S
0	60	60	60	60
10	55	40	45	58
20	50	22	31	55

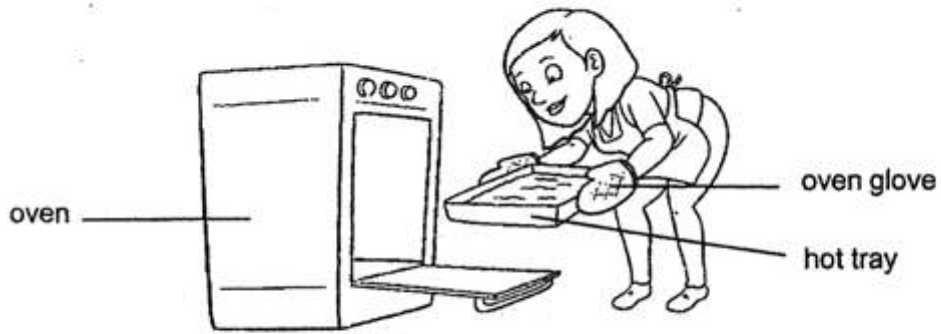
State the source of heat in this experiment.

[1]

Using the information given on the table, state which material P, Q, R or S is the best conductor of heat.

Give a reason for your answer.

The diagram below shows Mary using a pair of oven gloves to remove a hot tray from the oven.



Which material, **P**, **Q**, **R** or **S**, would be most suitable to make the oven gloves? [2]

Explain your answer.

The diagram below shows a desert.

A desert is a hot and dry place that has a lot of sand and few plants.



The table below shows the temperature of the sand at a particular time of the day.

Time	Temperature at the surface of the sand (°C)	Temperature underground (°C)
12 noon	38	14

Diagram X shows a lizard which lives in the desert.

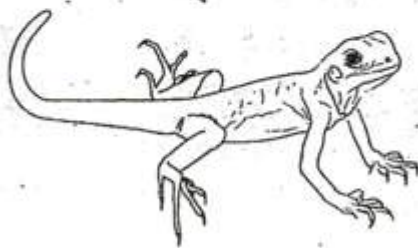


Diagram X

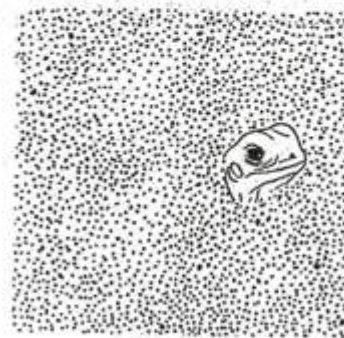


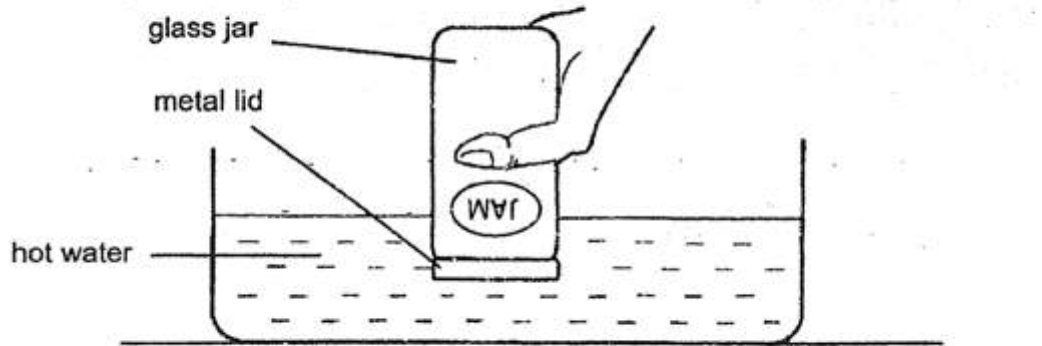
Diagram Y

During the day, the lizard will bury itself in the sand as shown in diagram Y.

Using the information given in the table, explain how burying itself in the sand helps the lizard to stay cool

A metal lid was fitted tightly on a glass jar.

Mani placed the metal lid and part of the glass jar into a container of hot water as shown in the diagram below.

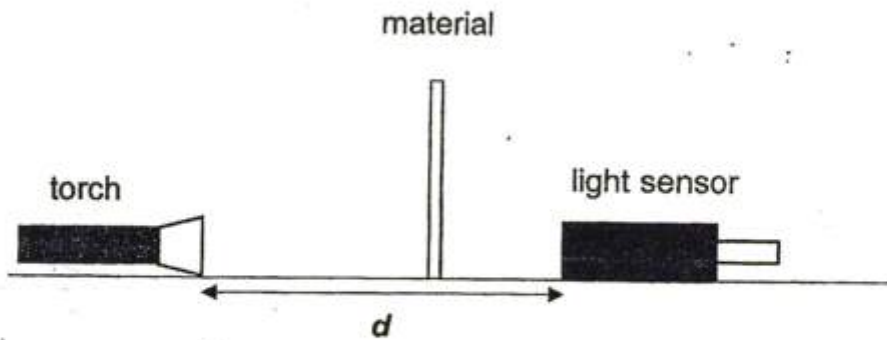


After a few minutes, Mani could remove the metal lid easily.

[2]

Explain why.

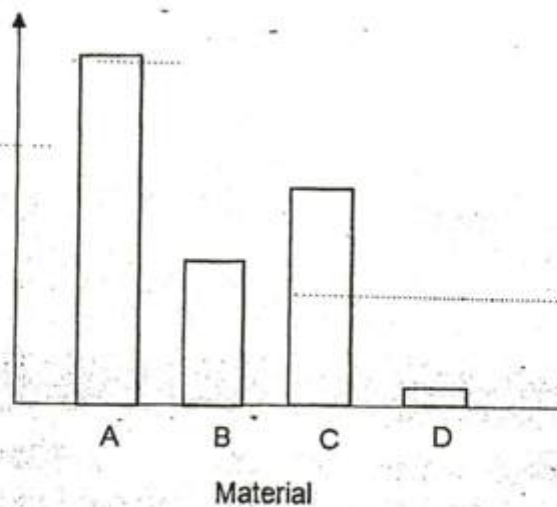
i. Ali set up an experiment as shown below.



He wanted to find out how much light passes through four materials, A, B, C and D.

The same light sensor was used to detect the amount of light that passed through each material. He recorded his results in the bar graph below.

Amount of light detected by light sensor (lux)



Which of following variable(s) must be kept the same so that his experiment would be a fair test?

Place a tick (✓) in the box if the variable must be kept the same.

[2]

- A) Distance between the torch and the light sensor, d
- B) The thickness of the material
- C) Type of material

Question 46 of 60

Primary 4 Science (Term 4) 0 pts

Ali wants to make window curtains that would keep his room as dark as possible

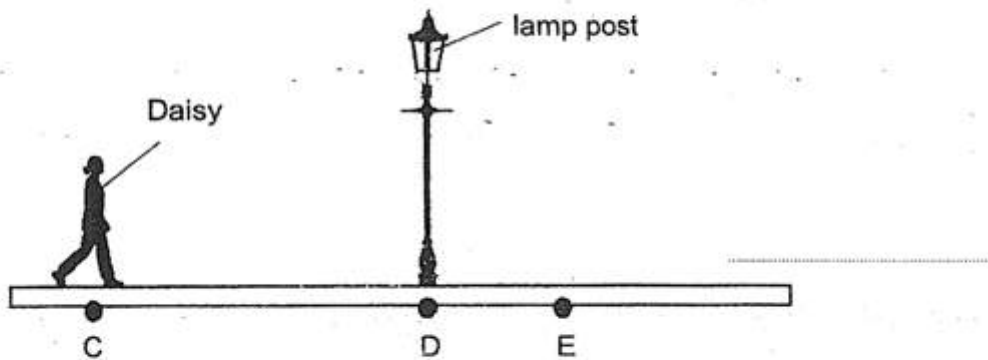
Based on the information given in the bar graph, which material A, B, C or D should Ali choose to make his window curtains?
Explain your answer.

Question 47 of 60

Primary 4 Science (Term 4) 0 pts

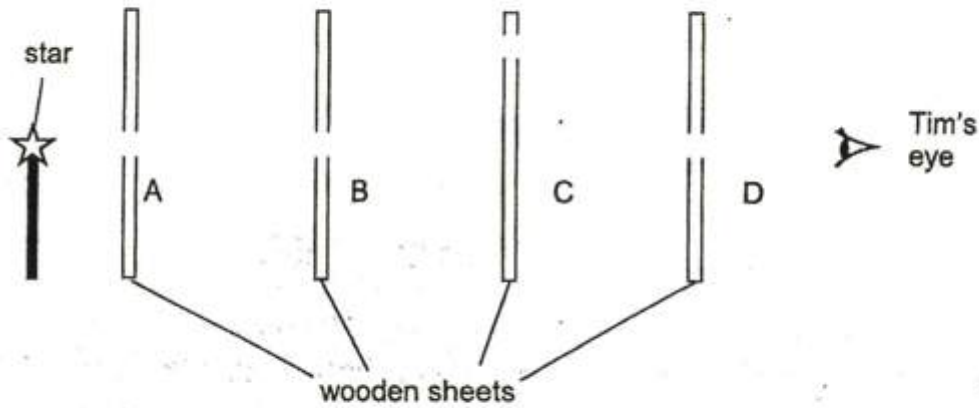
Daisy was walking from point C to D and then to E as shown in the diagram below.

The length of her shadow changed as she walked past points C, D and E.



Describe how the length of Daisy's shadow changed as she walked from point C to point D to point E. [1]

In a lighted room, wooden sheets A, B, C and D are placed in a straight line as shown in the diagram below. Tim is looking through the holes of the wooden sheets.



Will Tim be able to see the star on the other side of the wooden sheets?

[2]

Explain why.

Question 49 of 60

Which wooden sheet (A,B,C or D) must Tim remove in order to see the star at the other end.

- A) A
- B) B
- C) C
- D) D

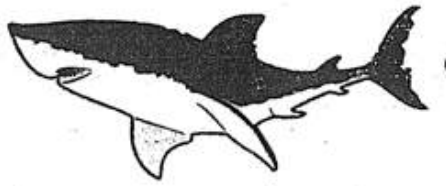
Match the options below to the correct groups

1. []



A. bird

2. []



B. mammal

3. []

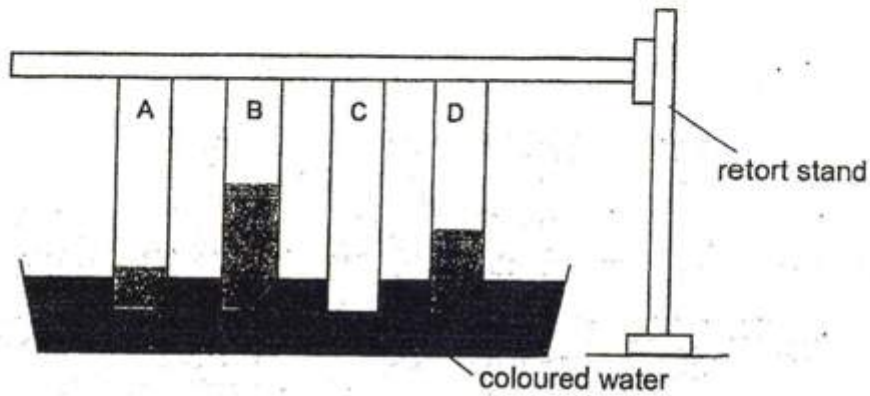


C. fish

Ben carried out an experiment to test how well each material can absorb water.

Materials A, B, C and D, which are of the same size and thickness, were immersed in a tray of coloured water.

The results of his experiment are shown in the diagram below.



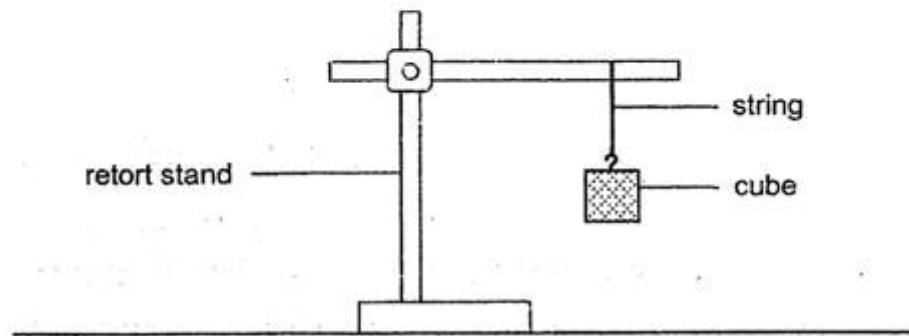
raincoat

Based on the results of the experiment, which material, A, B, C or D, is the most [1] suitable for making a raincoat shown above?

Explain your answer.

Ben suggested that material B is plastic. Is he correct? Explain your answer

Jane conducted an experiment with the set-up shown below. She hung cubes of different masses on the string until it broke. She repeated the experiment with strings made of materials, S, T and U. The strings are of equal thickness and length.



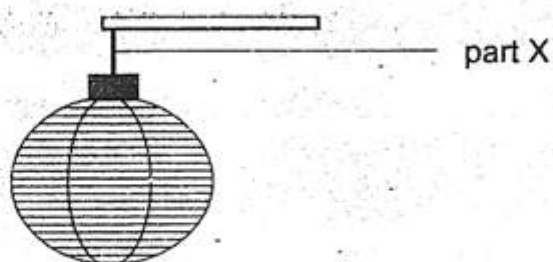
The results of the experiment are shown in the table below.

String	Mass of cube needed to break the string (kg)
S	3
T	5
U	8

State the property of the string Jane is testing.

[1]

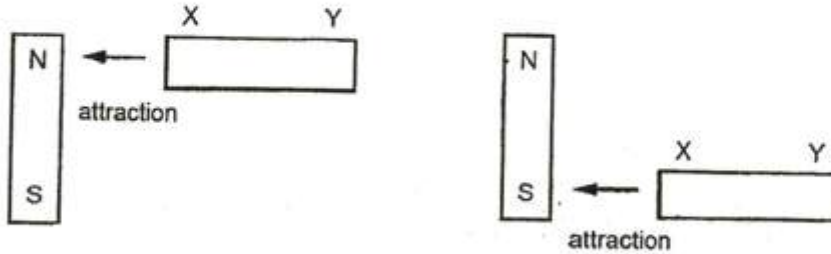
The diagram below shows a lantern that has a mass of 6 kg.



Based on the results of the experiment, which string, S, T or U is most suitable to make part X of the lantern? Explain your answer. [1]

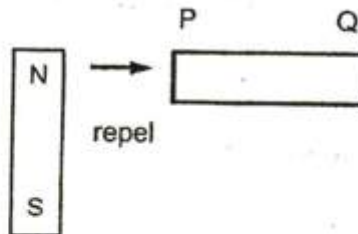
A metal rod XY is placed near a bar magnet.

End X is attracted when it is placed near to the North Pole (N) of the magnet, and also when it is placed near to the South Pole (S) as shown in the diagrams below.



Another metal rod PQ is also placed near the same bar magnet.

End P is repelled when it is placed near to the North Pole (N) of the magnet as shown in the diagram below.



In the boxes below state what will be observed when end Y and end P are brought near the South Pole (S) of the bar magnet.

[1]

	Write repel or attract
(i) end Y brought near South Pole (S)	

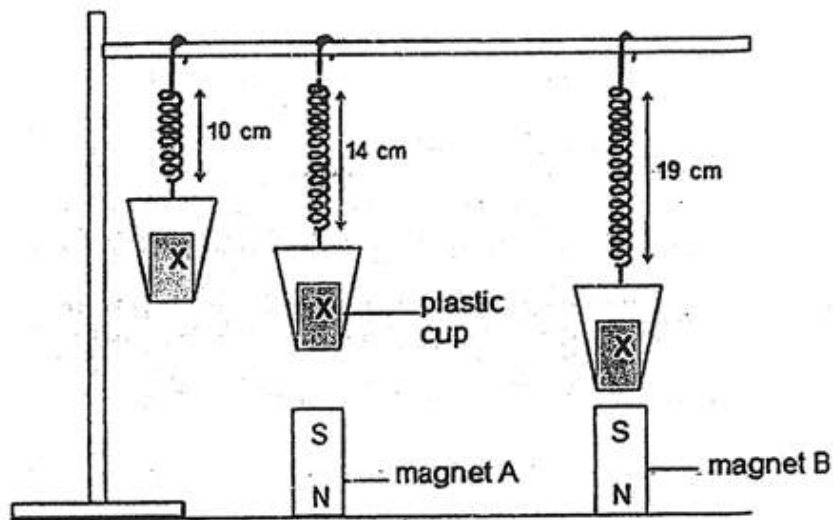
- A) attract
- B) repel

end P brought near South Pole (s)

- A) attract
- B) repel

The diagram below shows three identical plastic cups with object X in each one of them.

The cups are attached to three identical springs.

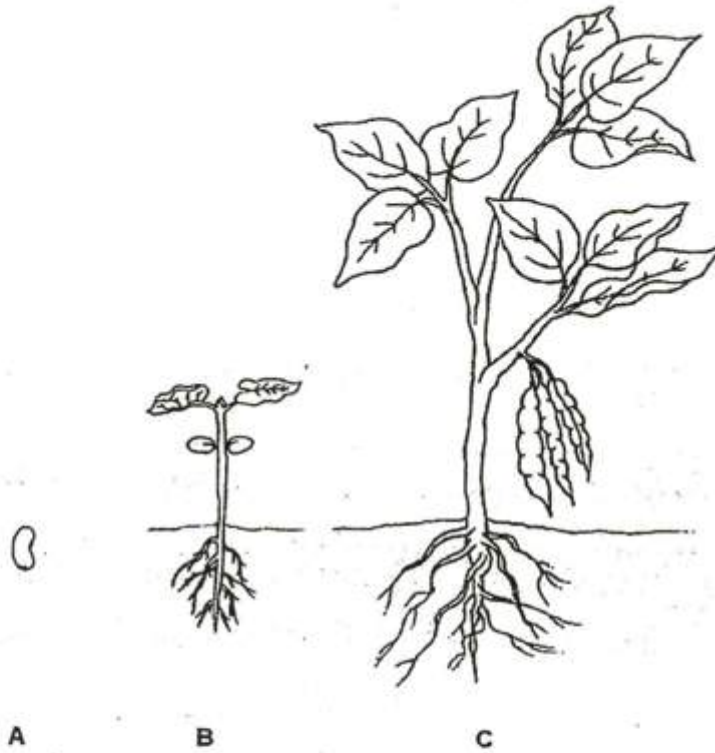


When magnets A and B were placed directly below the plastic cups, it was observed that the springs stretched longer as shown in the diagram above.

Explain why the springs stretched longer.

Which magnet, A or B, is stronger? Based on the diagram shown above, explain your answer.

The diagram below shows the stages in the life cycle of a plant.



Choose the correct words from the box to answer the question below.

egg seed young plant adult plant

Name the stages A and C in the life cycle of the plant.

A: _____

- A) egg
- B) seed
- C) young plant
- D) adult plant

C: _____

- A) egg
- B) seed
- C) young plant
- D) adult plant